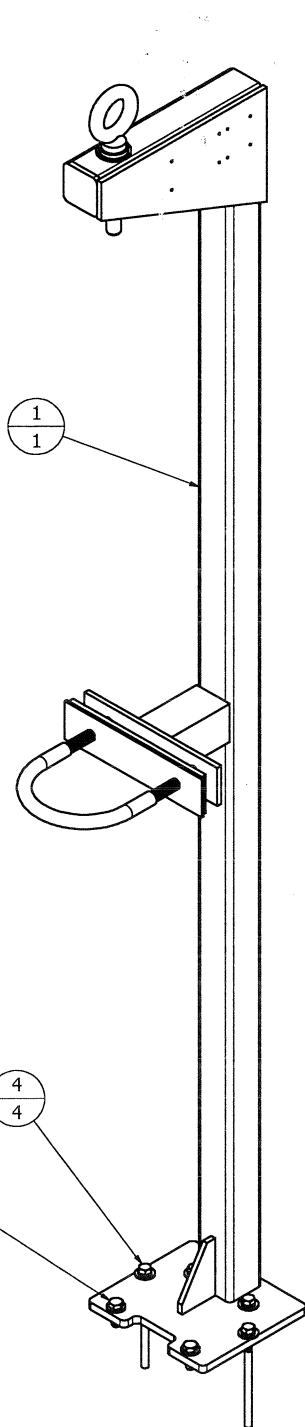


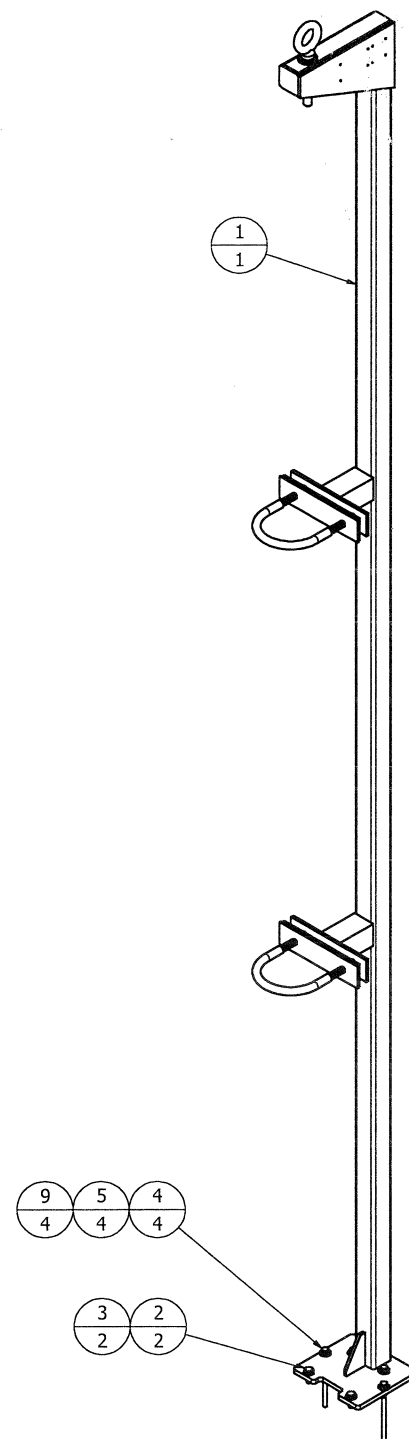
A35106

ZONE	REV	DESCRIPTION	ECO NO.	DATE	DRWN	CHKD	PE
ALL	A	INITIAL RELEASE	03-3229	04-01-15	PL	TB	RS
ALL	B	REVISE DESIGN TO ADD A PURCHASED EYEBOLT BY JWC. INCREASE HEIGHT OF THE LIFTING BAIL	03-3583	11-14-16	N/A	RS	RS
ALL	C	CONVERTED TO ASSEMBLY DRAWING, WAS FABRICATION/ASSEMBLY DRAWING. REVISED EYE BOLT LOCATION TO IMPROVE VERTICAL ORIENTATION OF GRINDER WHEN LIFTED. ADDED STANDARD ELECTRIC, HYDRAULIC AND EXTENDED SHAFT OPTIONS.	03-3291	02-01-17	N/A	TN	RS
ALL	D	ADD US STEEL MATERIAL DESIGNATION.	03-3358	06-29-19	N/A	PL	RU
B1 TO B4	E	REPLACE EYEBOLT WASHER. ITEM 7 IS 3016H-U, WAS 30312-U.	03-3374	7-10-19	N/A	PL	SA
ALL	F	ROTATED VIEWS TO SHOW NAMEPLATE HOLES, REPLACED DETAIL B WITH FULL VIEWS AND UPDATED BORDER AND REVISION BLOCK.	03-3395	6-29-20	JS	UG	RS



A35106-E-ZZ (SHOWN)
(FOR ELECTRIC MOTOR, HYDRAULIC MOTOR
AND 1' - 1'-6" EXTENDED SHAFT SYSTEMS)

A35106-0024-ZZ (SHOWN)
(FOR 2' - 6'-6" EXTENDED SHAFT
SYSTEMS)



A35106-0084-ZZ (SHOWN)
(FOR 7' TO 10' EXTENDED SHAFT SYSTEMS)

1. INTERPRET DRAWING IN ACCORDANCE WITH ASME Y14.5M-1994 STANDARDS.
2. SEE TABLE ON PAGE 2 FOR ASSEMBLY PART #, DIMENSIONS AND REQUIRED QUANTITIES.
3. ADD SUFFIX (ZZ) FOR MATERIAL DESIGNATION.
 - SS = 304 SST
 - SU = 316 SST
 - MC = A36 STL
 - ZZ-US = US STEEL (MATERIAL SHALL BE UNITED STATES SOURCED)
4. FASTENER MATERIAL SHALL BE 316 SST ONLY.
5. INCLUDED WITH ITEM 11.
6. XXX = E - ELECTRIC MOTOR DRIVE (NO EXTENDED SHAFT)
 - H - HYDRAULIC MOTOR DRIVE (NO EXTENDED SHAFT)
 - 012 TO 120 - NOMINAL EXTENDED SHAFT LENGTH

CONTROLLED

	14	1	61009-U OR EQUIV.	LOCK WASHER 5/8 SPLIT	SST	
△	13	C	50122-U OR EQUIV.	HEX NUT 1/2-13	SST	
△	12	B	50120-U OR EQUIV.	LOCK WASHER 1/2 SPLIT	SST	
	11	1	30493 OR EQUIV.	EYE BOLT 5/8-11 X 4-1/2	SST	
△	10	D	30444 OR EQUIV.	U-BOLT 1/2-13 X 4-1/2	SST	
	9	4	30343-U OR EQUIV.	HHCS 5/16-18 X 5	SST	
△	8	1	30316-U OR EQUIV.	HEX NUT 5/8-11	SST	
	7	2	30168-U OR EQUIV.	FLAT WASHER 13/16 ID, 1-7/8" OD	316 SST	
	6	1	30215-U OR EQUIV.	LOCK WASHER 3/4 SPLIT	SST	
	5	4	30130-U OR EQUIV.	LOCK WASHER 5/16 SPLIT	SST	
	4	4	30104-U OR EQUIV.	FLAT WASHER 5/16	SST	
	3	2	30102-U OR EQUIV.	FLAT WASHER 3/8	SST	
	2	2	30101-U OR EQUIV.	HHCS 3/8-16 X 1 F/T	SST	
△	1	1	35106-0XXX-ZZ	LIFTING POST WELDMENT	ZZ	
ITEM		QTY	PART / ASSEMBLY NUMBER		DESCRIPTION	MATERIAL
PARTS LIST						
UNLESS OTHERWISE SPECIFIED DIMENSIONS ARE IN INCHES [mm]			CONTRACT NO.			
FRACTIONS # 1/16			DECIMALS .XX ± .03 .XXX± .005		ANGLES ± 1/2°	
MATERIAL			APPROVALS		DATE	
AS NOTED			DRAWN		P.LOO 11-11-15	
			CHECKED		T.BIARD 04-06-15	
			PROJ ENGR		R. SABOL 4-1-15	
			REVISED		J. SCHATZLEIN 6-30-20	
FINISH			△ 5		SIZE D	
DO NOT SCALE DRAWING					DRAWING NO. A35106	
					REV F	
					SCALE: NONE	
					CAD MODEL: A35106-0012	
					SHEET 1 OF 2	

THIS DRAWING AND DATA ARE FULLY PROTECTED BY COPYRIGHT OWNED BY JWC ENVIRONMENTAL. THIS DRAWING AND DATA EMBODY PROPRIETARY INFORMATION WHICH IS THE CONFIDENTIAL PROPERTY OF JWC ENVIRONMENTAL AND SHALL NOT BE COPIED, REPRODUCED, DISCLOSED TO OTHERS, OR USED IN WHOLE OR IN PART FOR ANY PURPOSE WITHOUT THE EXPRESS WRITTEN PERMISSION FROM JWC. THIS DRAWING IS LOANED IN CONFIDENCE WITH THE UNDERSTANDING THAT IT SHALL BE RETURNED UPON DEMAND.

1

DRAWING NO.

A35106

6

5

4

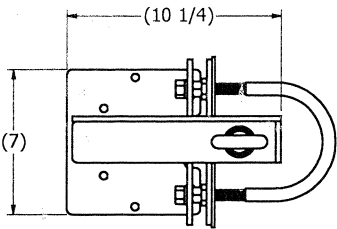
3

2

1

D

D



(Ø1 7/16)

(3 3/8)

(2 3/16)

C

C

B

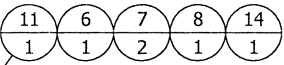
B

B

B

A

A

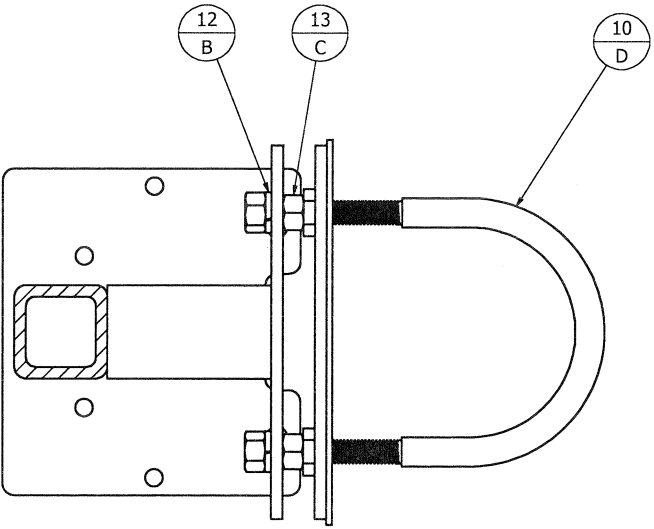


5

2

LIFTING POST OPTIONS

PART #	DESCRIPTION	A	B	C	D
A35106-E-ZZ	ELECTRIC MOTOR	39 3/8	0	0	0
A35106-H-ZZ	HYDRAULIC MOTOR	25 3/8	0	0	0
A35106-0012-ZZ	1' EXTENDED SHAFT	51 3/8	0	0	0
A35106-0018-ZZ	1'-6" EXTENDED SHAFT	57 3/8	0	0	0
A35106-0024-ZZ	2' EXTENDED SHAFT	63 3/8	2	4	1
A35106-0030-ZZ	2'-6" EXTENDED SHAFT	69 3/8	2	4	1
A35106-0036-ZZ	3' EXTENDED SHAFT	75 3/8	2	4	1
A35106-0042-ZZ	3'-6" EXTENDED SHAFT	81 3/8	2	4	1
A35106-0048-ZZ	4' EXTENDED SHAFT	87 3/8	2	4	1
A35106-0054-ZZ	4'-6" EXTENDED SHAFT	93 3/8	2	4	1
A35106-0060-ZZ	5' EXTENDED SHAFT	99 3/8	2	4	1
A35106-0066-ZZ	5'-6" EXTENDED SHAFT	105 3/8	2	4	1
A35106-0072-ZZ	6' EXTENDED SHAFT	111 3/8	2	4	1
A35106-0078-ZZ	6'-6" EXTENDED SHAFT	117 3/8	2	4	1
A35106-0084-ZZ	7' EXTENDED SHAFT	123 3/8	4	8	2
A35106-0090-ZZ	7'-6" EXTENDED SHAFT	129 3/8	4	8	2
A35106-0096-ZZ	8' EXTENDED SHAFT	135 3/8	4	8	2
A35106-0102-ZZ	8'-6" EXTENDED SHAFT	141 3/8	4	8	2
A35106-0108-ZZ	9' EXTENDED SHAFT	147 3/8	4	8	2
A35106-0114-ZZ	9'-6" EXTENDED SHAFT	153 3/8	4	8	2
A35106-0120-ZZ	10' EXTENDED SHAFT	159 3/8	4	8	2



SECTION A-A

CONTROLLED

JWC JWC ENVIRONMENTAL
2850 S. RED HILL AVE, SUITE 125, SANTA ANA, CA 92705

LIFTING POST ASSEMBLY
30005 GENERAL ARRANGEMENT
30K IN-CHANNEL MUFFIN MONSTER

SIZE	DRAWING NO.	REV
D	A35106	F
SCALE:	NONE	CAD MODEL: A35106-0024

SHEET 2 OF 2

ALL RIGHTS RESERVED

8

7

6

5

4

4

3

2

1

CG 7/2/20