



## COMMISSIONERS COURT OF BRAZORIA COUNTY

**ORDER NO. H.21.**

**9/9/2025**

Final Acceptance of Roads - Sierra Vista West Section 8 - Abstract 329 (Precinct 4)

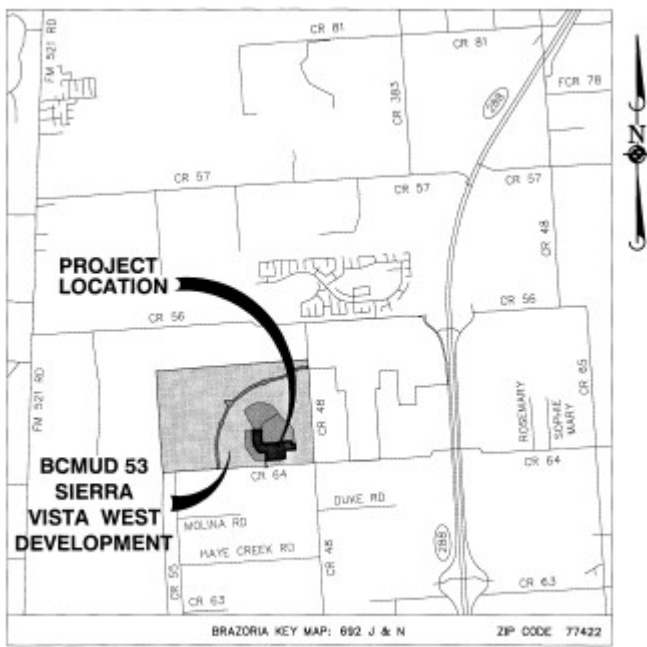
Whereas, the plat of Sierra Vista West Section 8 - Abstract 329 (Precinct 4), was approved by the City of Iowa Colony on February 25, 2022; and filed for record in Brazoria County Official Public Records, County Clerk's File #2022015843 on March 15, 2022; and

Whereas, this plat meets applicable criteria established by Commissioners Court Order 6.P.2. on February 9, 2021 for consideration under Brazoria County Subdivision Regulations adopted by Commissioners Court Order No. 49 on October 24, 2006; and

Whereas, the roads serving this section have now been constructed in accordance with the Brazoria County Subdivision Regulations; and

Whereas the period of Maintenance has been successfully completed, said roads shall be accepted into the County Road System for maintenance beginning this day September 9, 2025.

<u>CR #</u>	<u>Street Name</u>	<u>ROW</u>	<u>Length (FT)</u>	<u>Length (Mi)</u>
1287	Homewood Point Lane	60'	775.03	0.147
1463	Temple Grove Drive	60'	1030.52	0.195
1464	Tallac Terrace	60'	425.29	0.081
1465	Amador Peak Drive	60'	494.60	0.094
1286	Vista View Drive	60'	155.00	0.029

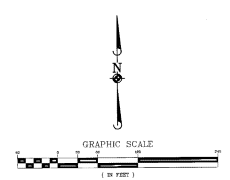
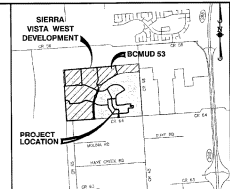
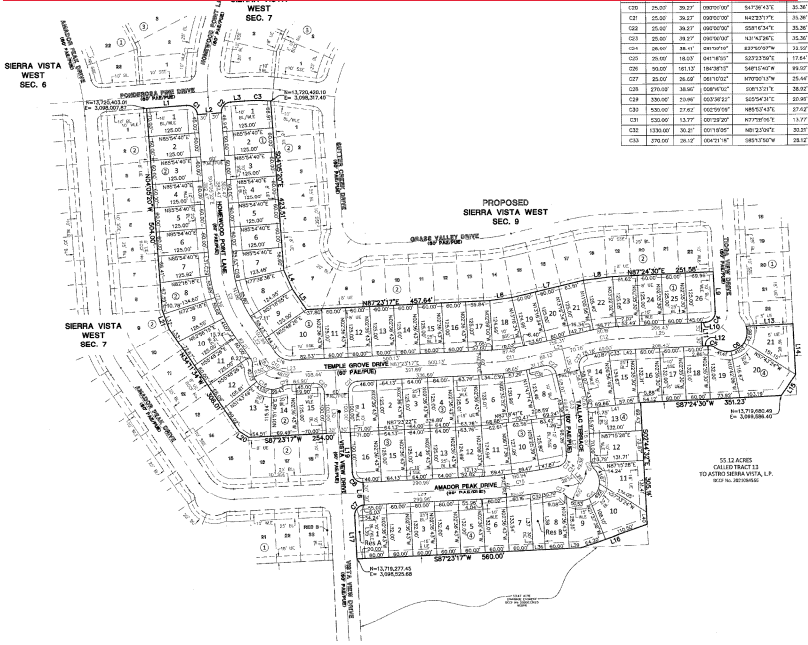


**LOCATION MAP**  
1"=1/4 mile

[illegible]

CR	Street Name	ROW Width	Length(ft.)	Length (mi.)
1287	Homewood Point Lane	60'	775.03	0.147
1463	Temple Grove Drive	60'	1030.52	0.195
1464	Tallac Terrace	60'	425.29	0.081
1465	Amador Peak Drive	60'	494.60	0.094
1286	Vista View Drive	60'	155.00	0.029

LINE	WAVELENGTH	LOG(gf)
L1	4850.447	15.007
L2	4850.447	15.007
L3	4850.447	15.007
L4	5430.021	51.47
L5	5430.021	51.47
L6	5430.021	51.47
L7	5430.021	51.47
L8	5430.021	51.47
L9	5430.021	51.47
L10	5430.021	51.47
L11	5430.021	51.47
L12	5430.021	51.47
L13	5430.021	51.47
L14	5430.021	51.47
L15	5430.021	51.47
L16	5430.021	51.47
L17	5430.021	51.47
L18	5430.021	51.47
L19	5430.021	51.47
L20	5430.021	51.47
L21	5430.021	51.47
L22	5430.021	51.47
L23	5430.021	51.47
L24	5430.021	51.47
L25	5430.021	51.47
L26	5430.021	51.47
L27	5430.021	51.47
L28	5430.021	51.47
L29	5430.021	51.47
L30	5430.021	51.47
L31	5430.021	51.47
L32	5430.021	51.47
L33	5430.021	51.47
L34	5430.021	51.47
L35	5430.021	51.47
L36	5430.021	51.47
L37	5430.021	51.47
L38	5430.021	51.47
L39	5430.021	51.47
L40	5430.021	51.47
L41	5430.021	51.47
L42	5430.021	51.47
L43	5430.021	51.47
L44	5430.021	51.47
L45	5430.021	51.47
L46	5430.021	51.47
L47	5430.021	51.47
L48	5430.021	51.47
L49	5430.021	51.47
L50	5430.021	51.47
L51	5430.021	51.47
L52	5430.021	51.47
L53	5430.021	51.47
L54	5430.021	51.47
L55	5430.021	51.47
L56	5430.021	51.47
L57	5430.021	51.47
L58	5430.021	51.47
L59	5430.021	51.47
L60	5430.021	51.47
L61	5430.021	51.47
L62	5430.021	51.47
L63	5430.021	51.47
L64	5430.021	51.47
L65	5430.021	51.47
L66	5430.021	51.47
L67	5430.021	51.47
L68	5430.021	51.47
L69	5430.021	51.47
L70	5430.021	51.47
L71	5430.021	51.47
L72	5430.021	51.47
L73	5430.021	51.47
L74	5430.021	51.47
L75	5430.021	51.47
L76	5430.021	51.47
L77	5430.021	51.47
L78	5430.021	51.47
L79	5430.021	51.47
L80	5430.021	51.47
L81	5430.021	51.47
L82	5430.021	51.47
L83	5430.021	51.47
L84	5430.021	51.47
L85	5430.021	51.47
L86	5430.021	51.47
L87	5430.021	51.47
L88	5430.021	51.47
L89	5430.021	51.47
L90	5430.021	51.47
L91	5430.021	51.47
L92	5430.021	51.47
L93	5430.021	51.47
L94	5430.021	51.47
L95	5430.021	51.47
L96	5430.021	51.47
L97	5430.021	51.47
L98	5430.021	51.47
L99	5430.021	51.47
L100	5430.021	51.47

[illegible]

**FINAL PLAT**  
**SIERRA VISTA WEST**  
**SEC 8**

A SUBDIVISION OF 18.91 ACRES OF LAND  
CUJI U/L 11E  
LAVACA NAVIGATION COMPANY SURVEY, A-329

BRAZORIA COUNTY, TEXAS

78 LOTS      2 RESERVES      4 BLOCKS

JANUARY 2022

**OWNER/  
DEVELOPER:**

ASTRO SIERRA VISTA, L.P.  
A SEABURY UNITED PARTNERSHIP  
C/O SEABURY LAND ADVISORS  
10000 MARKET DRIVE, SUITE 100  
LAWRENCE, KANSAS 66042

**ENGINEER/  
SURVEYOR:**

**ELEVATION**  
**NOTATION**

VERTICAL DATUM: NAVD83  
VERTICAL DATUM: NGVD 29  
VERTICAL DATUM: MEAN SEA LEVEL  
VERTICAL DATUM: MEAN TIDE LEVEL  
VERTICAL DATUM: MEAN LOW WATER

VERTICAL DATUM: NAVD83  
VERTICAL DATUM: NGVD 29  
VERTICAL DATUM: MEAN SEA LEVEL  
VERTICAL DATUM: MEAN TIDE LEVEL  
VERTICAL DATUM: MEAN LOW WATER





**Engineer's Certificate of Substantial Completion**

OWNER: Brazoria County Municipal Utility District No. 53  
3200 Southwest Freeway, Suite 2600  
Houston, Texas 77027

CONTRACT: Construction of Water, Sanitary, Drainage, and Paving Facilities  
for Sierra Vista West Section 8

CONTRACTORS: Principal Services, Ltd. Bay Paving, LLC  
27080 Mandell Road 28411 Sweetgum Road  
Cleveland, Texas 77328 Magnolia, Texas 77354

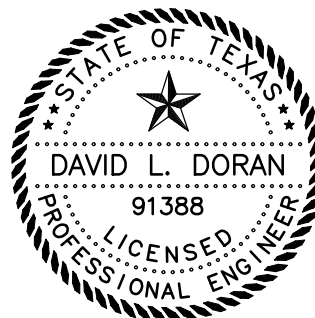
ENGINEER: Elevation Land Solutions  
2445 Technology Forest Boulevard, Suite 200  
The Woodlands, Texas 77381

I hereby certify that this project is substantially complete as of April 8, 2022; that the project was under periodic observation during construction; that all observation of the work was performed by or under my supervision; that to the best of my knowledge, the project was in accordance with and includes all items in plans and specifications approved by all authorities having jurisdiction; and "Record Drawings" will be furnished to the Owner.

Sincerely,

David L Doran, P.E., CCM  
Director of Construction Management

DLD/mm



January 3, 2023

P:\020 Sierra Vista West Development\023 Sec 8\Construction\Sierra Vista West Section 8 - Letter of Substantial Completion.docx



August 06, 2025

Brazoria County Engineering Department  
Attention: Ms. Megan Cook  
451 N. Velasco, Suite 230  
Angleton, Texas 77515

Sierra Vista West Section 8			
Street name	PAE/AUE	LF	MILES
Homewood Point Lane	60'	672	0.13
Temple Grove Drive	60'	1079	0.20
Tallac Terrace	60'	316	0.06
Amador Peak Drive	60'	523	0.10
Vista View Drive	60'	155	0.03

Re: Sierra Vista West Section 8  
Brazoria County Municipal District No. 53  
Request for Conditional Road Acceptance

Dear Ms. Cook:

On August 04, 2025, we performed a final inspection for this project along with William Stidman. We certify that the deficiencies that were noted during the final inspection have been corrected by the contractor, Bay Paving LLC.

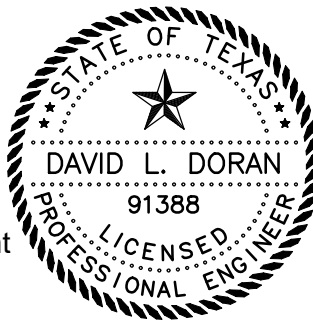
On behalf of our client, Brazoria County Municipal Utility District No. 53, we are requesting conditional acceptance of the pavement infrastructure for the above-referenced project.

Should you have any questions or require any additional information to support this request, please call me at 832-823-2200.

Sincerely,

David L Doran, P.E., CCM  
Partner, Construction Management

DLD/js



P:\020 Sierra Vista West Development\023 Sec 8\Construction\Acceptance Packages\Brazoria County\To Brazoria County\Sierra Vista West Section 8 - Road Acceptance Request.docx