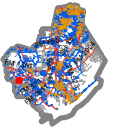




# Exhibit A



0 140 280 560 840  
Feet

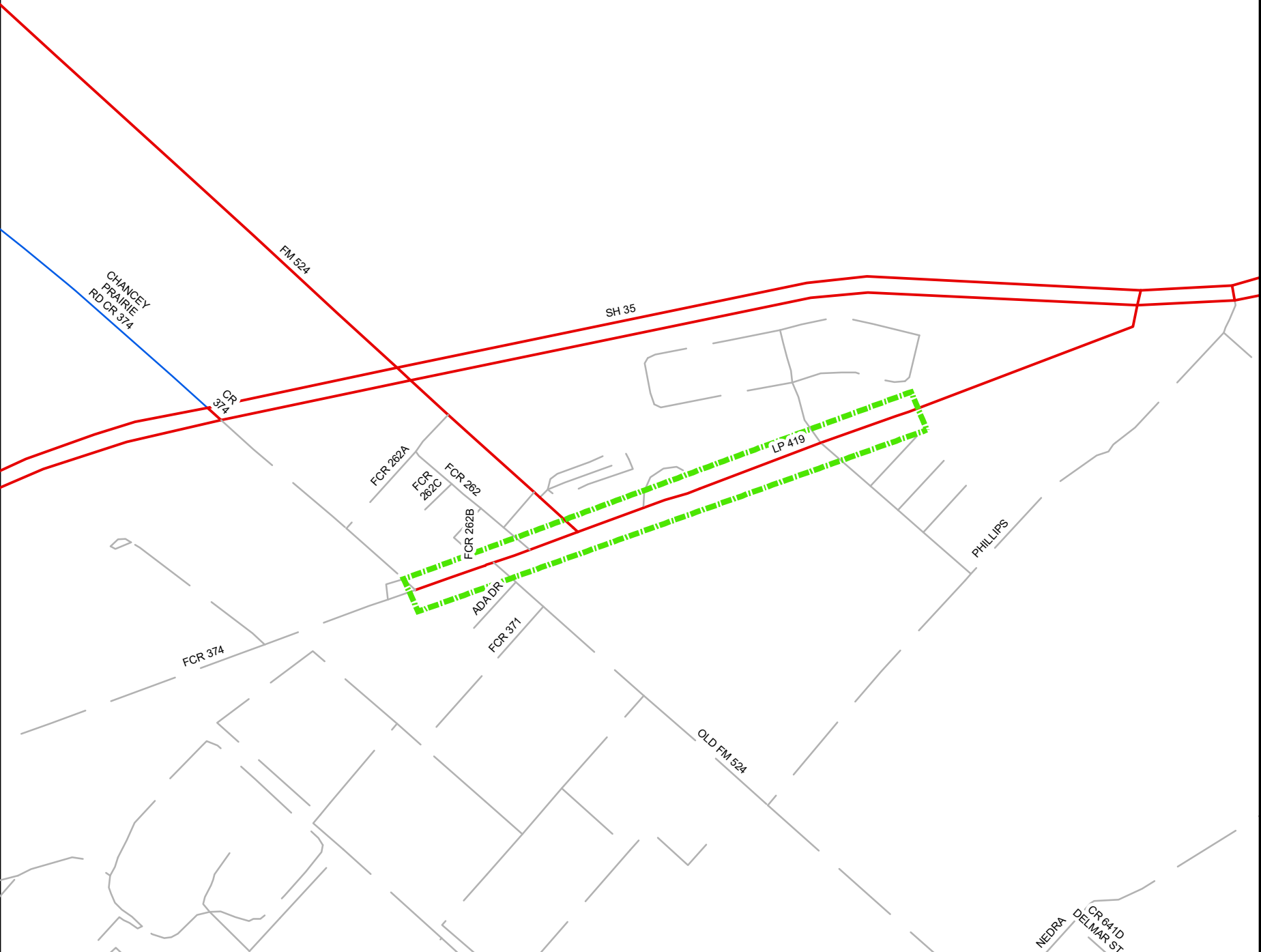
-  ROW to be abandoned
-  State Hwys
-  County Roads
-  Private Street


**Brazoria County  
Engineering**



ROW Abandonment

Exhibit A



 ROW to be abandoned

— State Hwys

—— County Roads

—— Private Street

**Brazoria County  
Engineering**



ROW Abandonment

Exhibit A

